



# NF-YC Polyclonal Antibody

<b>Catalog No</b>	YP-Ab-01903
<b>Isotype</b>	IgG
<b>Reactivity</b>	Human;Mouse;Rat
<b>Applications</b>	WB;IHC;IF;ELISA
<b>Gene Name</b>	NFYC
<b>Protein Name</b>	Nuclear transcription factor Y subunit gamma
<b>Immunogen</b>	The antiserum was produced against synthesized peptide derived from human NFYC. AA range:1-50
<b>Specificity</b>	NF-YC Polyclonal Antibody detects endogenous levels of NF-YC protein.
<b>Formulation</b>	Liquid in PBS containing 50% glycerol, 0.5% BSA and 0.02% sodium azide.
<b>Source</b>	Polyclonal, Rabbit,IgG
<b>Purification</b>	The antibody was affinity-purified from rabbit antiserum by affinity-chromatography using epitope-specific immunogen.
<b>Dilution</b>	WB: 1/500 - 1/2000. IHC: 1/100 - 1/300. ELISA: 1/10000.. IF 1:50-200
<b>Concentration</b>	1 mg/ml
<b>Purity</b>	≥90%
<b>Storage Stability</b>	-20°C/1 year
<b>Synonyms</b>	NFYC; Nuclear transcription factor Y subunit gamma; CAAT box DNA-binding protein subunit C; Nuclear transcription factor Y subunit C; NF-YC; Transactivator HSM-1/2
<b>Observed Band</b>	50kD
<b>Cell Pathway</b>	Nucleus.
<b>Tissue Specificity</b>	Brain,Lymph node,Synovial membrane tissue,
<b>Function</b>	function:Stimulates the transcription of various genes by recognizing and binding to a CCAAT motif in promoters, for example in type 1 collagen, albumin and beta-actin genes.,similarity:Belongs to the NFYC/HAP5 subunit family.,subunit:Heterotrimeric transcription factor composed of three components, NF-YA, NF-YB and NF-YC. NF-YB and NF-YC must interact and dimerize for NF-YA association and DNA binding.,
<b>Background</b>	This gene encodes one subunit of a trimeric complex forming a highly conserved transcription factor that binds with high specificity to CCAAT motifs in the promoters of a variety of genes. The encoded protein, subunit C, forms a tight dimer with the B subunit, a prerequisite for subunit A association. The resulting trimer binds to DNA with high specificity and affinity. Subunits B and C each contain a histone-like motif. Multiple transcript variants encoding different isoforms



have been found for this gene. [provided by RefSeq, Dec 2008],

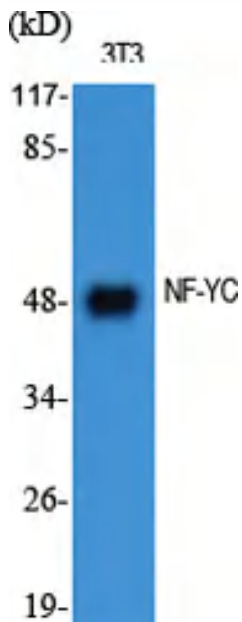
**matters needing attention**

Avoid repeated freezing and thawing!

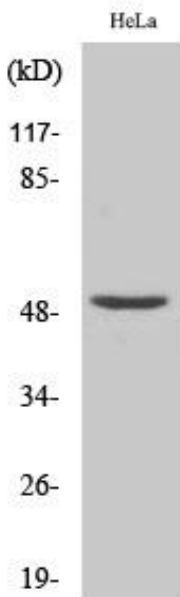
**Usage suggestions**

This product can be used in immunological reaction related experiments. For more information, please consult technical personnel.

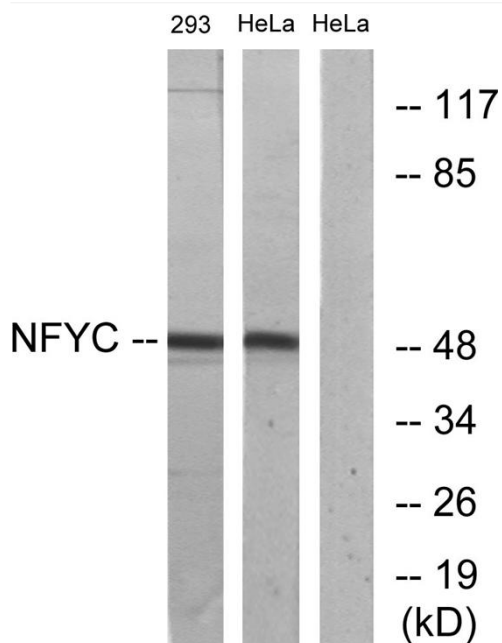
**Products Images**



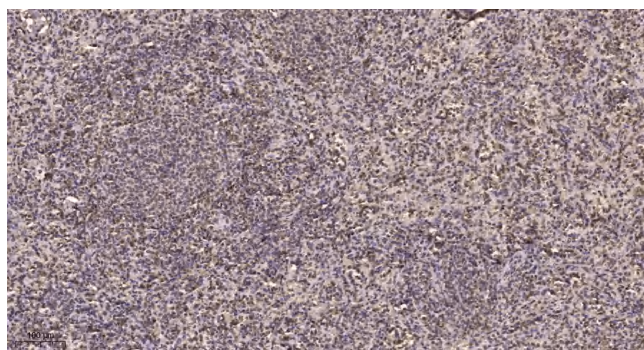
Western Blot analysis of various cells using NF-YC Polyclonal Antibody diluted at 1:1000



Western Blot analysis of 293 cells using NF-YC Polyclonal Antibody diluted at 1:1000



Western blot analysis of lysates from HeLa and 293 cells, using NFYC Antibody. The lane on the right is blocked with the synthesized peptide.



Immunohistochemical analysis of paraffin-embedded human spleen. 1, Tris-EDTA, pH9.0 was used for antigen retrieval. 2 Antibody was diluted at 1:200(4° overnight). 3, Secondary antibody was diluted at 1:200(room temperature, 45min).